

bradley's

art & frame

Fall/Winter 2006

bradley's art & frame OPENS SECOND LOCATION *at Memorial Antiques & Interiors*

8719 Katy Freeway • Houston, Texas 77024 • 713.827.9990



Ann Hedden

Ann comes to **bradley's** with 25 years of custom framing design experience. She will primarily be at our new location at *Memorial Antiques & Interiors*. Ann is looking forward to sharing her expertise with the Bradley's touch. Stop by and say "Hi"!

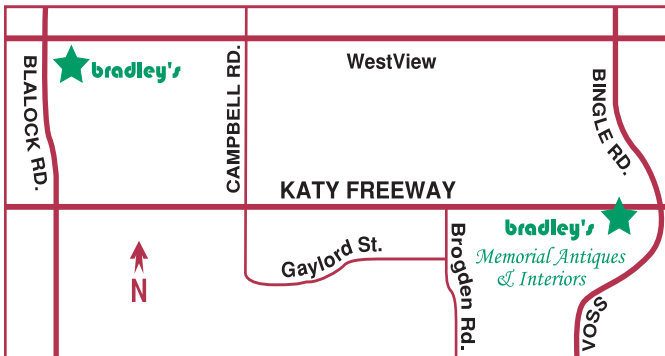
TO PROVIDE CONVENIENT SERVICE TO OUR CUSTOMERS... **bradley's**

has opened a second location. You don't need to guess which underpass is open during the completion of the Katy Freeway expansion. **bradley's** may be conveniently accessed via Brogden without even getting on the service road. (see map)

No, we have not moved from our Blalock building. **bradley's art & frame** on Blalock is still open and will remain open.

bradley's art & frame - Memorial will be open 10-6 Monday thru Saturday and 12-4 on Sunday. Everything you have come to expect from us for the last 37 years is still available: Quality, Design, Creativity, Selection, Timeliness, Friendly Helpful Designers, Visualization Software (see your completed frame before the work is done), Conservation, Preservation, Restoration, and did we mention...Friendly Helpful Designers?

You will also see an exciting array of beautiful top quality antiques and exquisite ideas for your home. **bradley's** is very pleased to be part of Memorial Antiques and Interiors.



bradley's art & frame Unconditionally guarantees our quality and your satisfaction.

look who's coming to bradley's *Silhouette Artist, Suzanne Marsh*

Suzanne will be cutting her adorable silhouettes of *your child or your pet* on **Saturday, November 25th**. Please call 713.461.5695 now for your appointment. She will be cutting silhouettes between 10-12 and 2-4. The cost is \$50, for which you will receive *2 copies* of each portrait silhouette – one to keep and one to give. Children and pets do not need to sit still and the cutting takes about 5 minutes.

At the age of three, Suzanne began cutting Betsy McCall paper dolls from the monthly pages of *McCall's Magazine*. For the past thirty years, she has been cutting silhouettes professionally. "Today I'm very proud of the fact that I cut silhouettes of dogs in conformation competition along with their owners or handlers" says Marsh. She feels that her "best work" is her silhouettes. We agree.



We welcome your pets – please abide by the following policy:

- Dogs on leashes
- Cats in carriers

You may make an appointment for groups or a "family" sitting, to be scheduled on another day soon after the 25th. **bradley's art & frame** guarantees all framing will be completed in time for gift-giving. We'll have a beautiful selection of perfect frames for your treasured silhouettes. **Ask about our framing specials.**

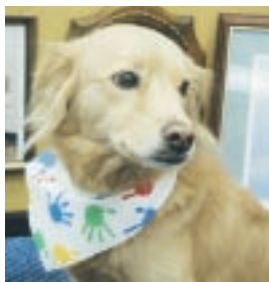
Please call for your appointment now.

Megan, *Shop Dog in Training*

Have you met Megan yet? She's a cute, blond 2-year-old rescue from the SPCA.

Nicki decided it was time to retire. She's doing just fine, but has a little arthritis and prefers to rest during the day. Being a shop dog is a demanding job.

We recently learned that Megan has a very special talent – she loves to sing Happy Birthday. During a recent employee birthday celebration, she joined in,



running from one person to another singing at the top of her little lungs. So, we have made arrangements with her to serenade you...on your birthday!!!

Please call for an appointment – we have to be sure that she's in the "mood". Megan also requests a \$10 donation payable to the SPCA – she would like to help other animals find wonderful homes and discover their own special talents.

too busy to come
Custom Picture Framing **We will:**

Come to your home or office • Design your framing • Using our Visualization software, e-mail you a photo showing the "completed" frame • Create the framing • Deliver and hang it in your home or office.

to bradley's?

bradley's Art & Frame recently had a booth at the WBEA (Women's Business Enterprise Alliance) Expo at Reliant Center and also at the West Houston Chamber of Commerce Showcase at the Westside Tennis Center. Booths are a lot of work, but it is highly energizing to meet new people and show off our work.

sunflower needlepoint

Anne Hooper brought this dramatic needlepoint of a sunflower to Lucy to design the perfect frame. They chose a new moulding, Tabacchino Tobacco Leaf, in a 3" wide size to complement the shape of the flower petals. Lucy also selected a mottled gold-colored gloss lip to highlight the colors of the flower. We think the results are "perfect". Thanks, Anne, for trusting Bradley's with your beautiful work.



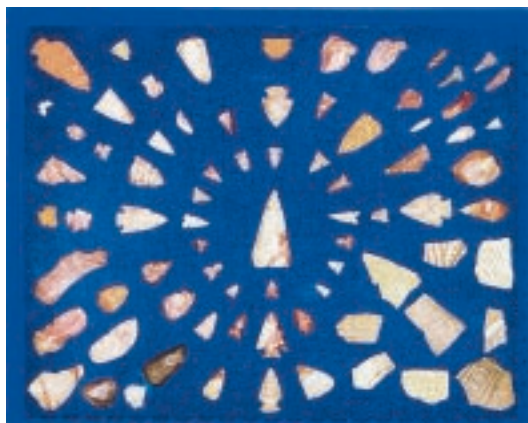
apple magazine cover

Kenneth & Sandra Gilbert brought this copy of Apple Magazine "Incider" autographed by Steve Wozniak. It was being framed as a gift for their son, Jeff. Lucy probably set a record with the number of mats (7) to replicate the Apple logo. Each color was inlaid next to the others in the same order as the logo. The magazine was kept in tact and framed with a thin black moulding to provide support. The framing was completed with a brushed satin nickel frame and Museum glass to provide UV protection and eliminate reflections. Thank you to the Gilberts for many years of fascinating framing projects.

arrowheads and pottery shards

Sue Snider brought this very important collection of arrowheads and pottery shards in to Kathleen for re-framing. Sue's father, a friend and his friend's father, who was interested in archeology, had collected the pieces while walking outside of Mobeetie, TX close to Ft. Elliott. Sue's dad had mounted the items on a vibrant blue background. She asked us to re-mount them, but maintain the identical layout. Kathleen selected a rustic charcoal cap, scoop shaped liner and burl/black fillet. The arrowheads and shards were carefully

removed and re-mounted on a suede called "Bomber Jacket Seaweed". (Love these names!) The framing was completed with Museum glass. Thank you, Sue, for trusting Bradley's with your family treasure.



family memorabilia

Caroline Casterline and Lucy literally worked for years on this project. These are all items and photographs from Caroline's family. The Bible is very fragile and cannot support its own weight, so it is encased in a Plexiglas box. The watches, beads, charm bracelet and glasses are all hand-stitched to the "Sepiatone" linen background. The photos are lifted off the surface in a random layout to suggest that someone had just laid them down. The frame is a Victorian patterned walnut shadowbox. Naturally, we used the Conservation Clear glass to protect from UV. Caroline, we are grateful for your confidence in Bradley's.



old spanish altar cloth

Lynn Holender purchased this exquisite antique altar cloth in Spain. She and Lucy selected a new moulding, Palladio, which expresses the same richness as the embroidered fabric. We used Lynn's Teal velvet fabric for the background and hand-stitched the textile carefully. The gold fringe was left loose to hang naturally. The altar cloth dates to the 1780's and is now protected indefinitely. Thank you, Lynn, this is a spectacular piece.



brass panel

from cruise ship "Stella Solaris"

During her work as a travel agent, Kay Gutowsky escorted many groups on cruises aboard the Stella Solaris. When the owners decided to retire and dismantle the ship, Kay purchased this extraordinary brass decorative panel. We selected an equally dramatic frame: a 5" wide black with gold panel and scrafitto corners which pick up part of the pattern on the brass. We love the result. Thanks, Kay.



ballet shoes

Judy McClure decided to preserve 2 pair of her daughter's ballet shoes. Lucy hunted for just the right shade of fabric for the background, and found "Pink Pearl" moiré. They selected an antique ornate silver shadow box with a matching silver fillet. We used a deep wedge liner to support the Museum glass above the shoes, which were hand-stitched to the background. The ribbon ties were coiled and stitched into place. Thanks, Judy, this is a lovely keepsake for you and your daughter.



...a what ??

Congratulations!

Skip Piatkowski, owner of SuperShot Delivery was the winner of G. Harvey's *"Trailhands and Trollies"* in the e-mail contest from our last newsletter.



WIN this handsomely framed **G. Harvey Canvas "Trailhands and Trollies"**.



This is a \$1200 VALUE – it can be yours absolutely free... just send an e-mail to:
winharvey@bradleysartandframe.com

It is not necessary to type a message. We are building our e-mail list to better serve you. You will only receive our newsletter and an occasional announcement – probably no more than 2 or 3 times per year.
Your personal information will neither be sold nor shared in any way, shape or form.

We must receive your e-mail no later than 6:00 p.m. April 14, 2006 – the drawing will be held on Saturday, April 15, 2006 (it's not "taxing" to enter – you might win!)

Why Guess?

See your
"FINISHED"
Frame and Mat
Selection
in minutes at
Bradley's



bradley's art & frame *Personalized service and your satisfaction.*



staff update



pam retires

Pam and her husband, Ron, have built their "Dream Home" in College Station (close to Kyle Field).

Naturally, she wants to spend as much time as possible up there. We'll all miss her, and wish her well.

kathleen wilson



As a long-time customer who is very interested in art, Kathleen responded quickly when she heard we were looking for a new sales/designer. She's been in training with Lucy for several months and is progressing very nicely. Kathleen is anxious to meet everyone, so tell her "Hi" when you come in and let her design your "perfect" frame.

bradley's art & frame

was featured recently in the Professional Picture Framers Association Newsletter "For Members Only". Editor, Louise King, used 8 photographs of shadow box frames created by Bradley's designers for our customers. The topic was "Preserving Memories – Object Box Framing is the Perfect Solution for Memorabilia-Minded Customers".



1306 Blalock at Westview
Houston, Texas 77055
713-461-5695
www.bradleysartandframe.com

PRSRT STD
U.S. Postage
PAID
Houston, Tx
Permit 600



bradley's art & frame *Memorial*

8719 Katy Freeway
Houston, Texas 77024
713-827-9990



*Silhouette Artist,
Suzanne Marsh*

Saturday, Nov. 25th at
bradley's art & frame
Blalock location

holiday hours

bradley's art & frame - Blalock

Open – Monday through Saturday 9:00 a.m. – 6:00 p.m.
beginning November 27th. We are always
available by appointment.

Closed – Christmas Eve Sunday, 12/24

Closed – Christmas Day Monday, 12/25

Closed – Tuesday & Wednesday, 12/26 & 12/27
(the elves will need a rest)

Closed – New Years Eve and New Years Day 12/31 & 1/1

Closed – Inventory Monday 1/8/07

bradley's art & frame - Memorial

Open – Monday thru Saturday 10:00 a.m. to 6:00 p.m.

Closed – Christmas Eve Sunday, 12/24

Closed – Christmas Day Monday, 12/25

Closed – New Years Eve and New Years Day 12/31 & 1/1

Inside this Newsletter:

*Silhouette Artist at Bradley's Art & Frame
You Framed a What?*

*G.Harvey e-mail contest winner
Megan – the Shop Dog*

Holiday Services:

Complimentary Custom Gift Wrapping
with our special bows on Bradley's purchases.

Gift Certificates are always appropriate.

No cut-off dates for gift-giving, but earlier is always better.

*From our Bradley family to yours, we wish you
a peaceful & joyous Holiday Season!*

bradley's art & frame
15⁰⁰ JAN - FEB
GIFT CERTIFICATE
Custom Framing Only

Name: _____

AS SHOWN ON MAILING LABEL

1306 Blalock at Westview • 713-461-5695
www.bradleysartandframe.com

Not transferable • Not redeemable for cash • Only one gift certificate per invoice
Valid for the months of January and February, 2007

bradley's art & frame
15⁰⁰ DEC - JAN
GIFT CERTIFICATE
Custom Framing Only

Name: _____

AS SHOWN ON MAILING LABEL

1306 Blalock at Westview • 713-461-5695
www.bradleysartandframe.com

Not transferable • Not redeemable for cash • Only one gift certificate per invoice
Valid for the months of December and January, 2006

bradley's art & frame
15⁰⁰ NOV - DEC
GIFT CERTIFICATE
Custom Framing Only

Name: _____

AS SHOWN ON MAILING LABEL

1306 Blalock at Westview • 713-461-5695
www.bradleysartandframe.com

Not transferable • Not redeemable for cash • Only one gift certificate per invoice
Valid for the months of November and December, 2006