

You Framed a What ?

Great Grandfather, U.S. Congressman

Frances Moore commemorated the life of her Great Grandfather, W. R. Smith, in this shadowbox. He was a lawyer, judge and U. S. Congressman from Texas, between 1903 and 1916. Frances & Lucy sifted through numerous documents and more memorabilia than could be used. We chose several photos, tie pins, a political advertisement, invitations from President Roosevelt and President Woodrow Wilson and a Texas Historical Marker. Among the other unique items was an invitation from Lord Chamberlain to the Congressman's wife, Frances L. Breelove, to attend a party at Buckingham Palace. The design included a neutral beige linen background, gold frame with a carved leaf design and wood fillets emphasizing the photographs. Museum glass with UV protection creates the ideal non-reflective finished view.

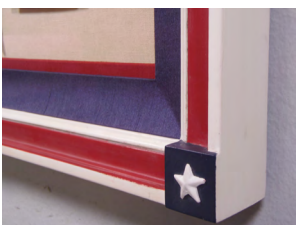


Aunt Frances Memorabilia

Frances asked us to create another shadowbox celebrating her Aunt Frances E. Smith. She was quite a popular and busy young woman. Traveling from Texas to Virginia by train, Frances attended Hollins College. She had many filled dance cards including this one from the U.S. Naval Academy. Along with the portraits are personal mementos: a silver monogrammed purse, button hook and beautiful crystal perfume flask. The memorabilia is framed in an ornate silver frame with a light silk fabric background. We appreciate and respect the way Frances wished to honor her ancestors. Now we know how she got the name "Frances."

American Flag, C. 1918

Bradley's was asked to showcase a "48 STAR" U.S.A. FLAG. The flag was carried by a 4 year old boy during a parade in Houston, Texas, commemorating the close of WWI. The handmade closed corner frame is painted red, white and blue and includes a corner block with a white star. The close-up photo shows the depth needed for the silk covered liner, mat and linen covered background. The flag has been preserved to reduce future deterioration.



20% OFF
Custom Framing!



WHEN:

April 22 - April 30

WHAT:

Purchase your Shop With Heart Card for a minimum donation of \$50 and receive **20% OFF CUSTOM FRAMING!** Over 500 of Houston's finest retailers AND restaurants are participating, with an opportunity to receive a complimentary appetizer or dessert with the purchase of an entrée.

WHERE:

Shop With Heart Cards are available for purchase at Bradley's!

WHY:

100 % of the proceeds benefit the American Heart Association

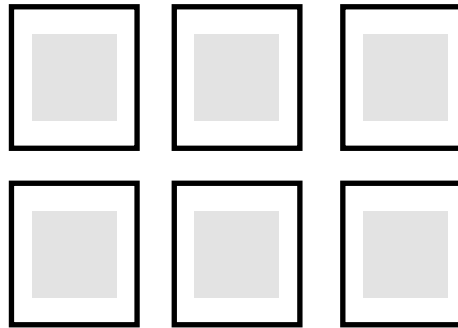
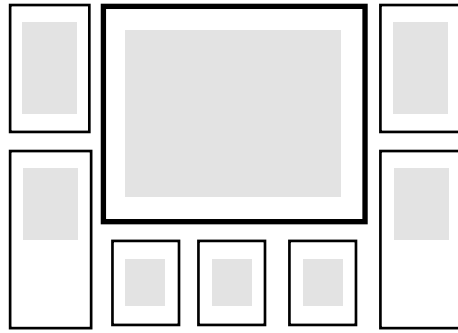
"Bradley's unconditionally guarantees our quality and your satisfaction."

Create a Framed Wall Grouping in Your Home

Helpful Tips

- ◆ Design and visualize your **wall grouping** on the floor before hanging pictures
 - ▶ Block out the wall on the floor with removable tape
 - ▶ Cut cardboard or kraft paper to represent the framed pieces and measure sizes
 - ▶ Create the layout arrangement based on the wall, frame size and orientation
- ◆ Include unusual items or found objects in the **grouping** for added interest
- ◆ Keep the room's decor in mind to present a well balanced look

There is not a set rule for creating a wall grouping, so have fun with it!



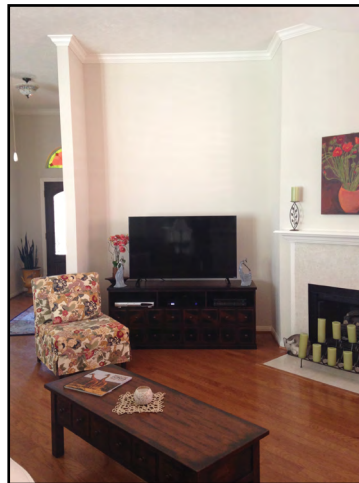
Bold groupings incorporate both large and small framed pieces.



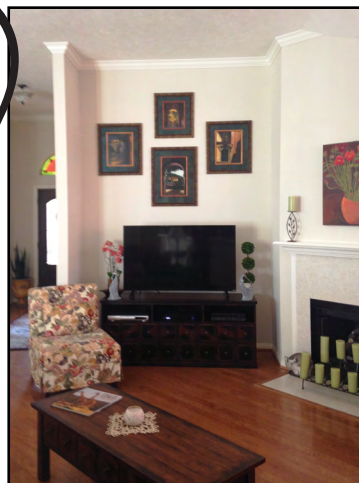
Think outside the box when choosing how to hang your artwork, like this diamond shaped lace design.



Mirrors are versatile and can work in just about any room in the house. Custom mirrors come in a variety of sizes and orientations. Add a mirror to your **wall grouping** for an eye catching display that offers a clean and simple design.



Before



After



Unify a **wall grouping** by using the same frame or matting. A general theme or similar artwork motif works as well.

What's NEW?



Prairie Denizen
by Larry Harris
15" x 12"



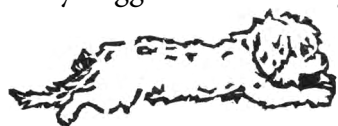
Trail Mom
by Larry Harris
5" x 4"

Featured are three new pieces of artwork we have available to frame in our gallery. As an approved dealer for Island International Artists and Somerset Fine Art, we have a variety of artists' work available to order.
Ask to see the different artwork collections!



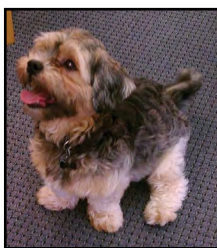
Palouse
by Tony Turpin
10 1/2" x 4"

"From the Dog House"
By Higgins



A few of
my favorite
things

- Breakfast, Dinner and an occasional treat
- Riding in the Car and Coming to Work – That's the best!
- Greeting my Customers
- Playing with my tennis ball and making "music" with my stuffed toys
- Playing with my big brother, black lab "Sparky," and chasing my cats
- I know Sit, Down, Wait, Please, Crawl, Roll Over, Shake, and Bye-Bye
- Wearing scarves and having my picture taken
- I'm so grateful I was rescued from the parking lot
- I'm just a happy little guy – I'll bet I can make you smile!



Preservation techniques for artwork:

- ◆ UV light protected glass
- ◆ Acid free materials
- ◆ Conservation mounting

Bring your artwork for a professional design consultation. Each piece is unique and must be evaluated for the proper type of preservation method and overall framing design.

Our designers can also help you create a beautiful wall grouping to compliment your home's decor.



Oil Painting
by Julian Onderdonk



Signed Print by Banksy

Closed Corner Frame: custom frame that is assembled prior to being finished, creating seamless corners.

Custom Options:

- ◆ Hand carved embellishments
- ◆ Water gilded Karat Gold/White Gold leaf
- ◆ Hand painted
- ◆ Compo ornaments: molded decorative pattern that can be added to the frame
- ◆ Size, Width and depth



Original Drawing
by Picasso

bradley's art & frame

1306 Blalock Rd.

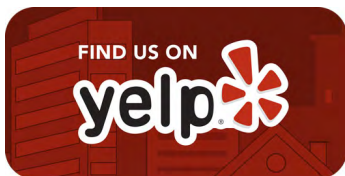
Houston, Texas 77055

BradleysArtandFrame.com

713-461-5695



PRSRT STD
US POSTAGE
PAID
Permit No. 600
Houston, Texas



Customer Highlight: WWII Wooden Clogs

Emily George is an avid WWII history enthusiast and knew about the 36th Infantry Division with the arrowhead unit patch. This division is a Texas National Guard Unit that was originally formed during WWI and has continued as a unit today. It was the first American combat unit to land in Europe. The unit was sent to Italy and made its way to southern France. They spent 400 days in battle and accepted the surrender of Field Marshall Hermann Goering. Fourteen men with the 36th Infantry Division were awarded the Medal of Honor for their WWII service. It had the ninth highest casualty rate of any Army Division in WWII. Thank you, Emily, for sharing this incredible piece of history with us.



“ I found these wooden clogs on Ebay for about \$12. The name “Ernie” is inscribed on the sides. I have often wondered if Ernie was the soldier who decorated these clogs or was Ernie one of the soldiers who did not make it back to Texas. There were no other bids on these shoes. ”

-Emily George

bradley's art & frame

\$25 Redeemable on
Custom Framing.
Use once per month
through August 2016.
Gift Certificate

Cannot be combined
with other offers